

2
Types

Drums

Friability Tester supports 2 types of drum :

- Standard drum
- Abrasion drum (for more rigorous informational testing of tablet and coating integrity)



Snap-lock™ mechanism

- Single or double drums can be held in position by a Snap-lock™ knob

2
Modes

Operation

The test can be performed in two different modes

- Timer mode
- Counter mode

ABC123

Alphanumeric keypad

- Alphanumeric keypad to enter the product and sample information

QbD

Quality by Design

- Complies with USP, Ph. Eur, IP specifications
- Automatic sample discharge
- Loading of samples into the drum without removing the drum
- Unique front loading system of the drum
- Positive engagement of the drums with the drive prevents any slippage
- 10° tilt of the drum with the bench top as per USP
- Automatic discharge of test samples into their individual trays
- Test data for ten different drugs can be saved as protocols
- Drums positions are not interchangeable ensuring accuracy of the results
- Automatic drum positioning for loading new samples
- Retention of programmed values in the memory of the instrument
- Online validation of the revolution count and speed
- Power failure detection allows remaining test completion on power resumption

f_x

Results

- Results like % friability and weight-loss can be calculated

Friability Testers



Dual Drum Friability Tester with Weighing Scale Interface (EF-2W)

Dual Drum Friability Tester (EF-2) is also available



Front loading



Tilt



Security with password



Report



LAN (optional)

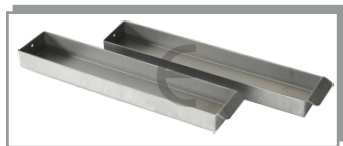


Print

Standard accessories



Friability drum
Part no - 0402A00009



Tablet collection SS drawer
Part no - 0402A00003

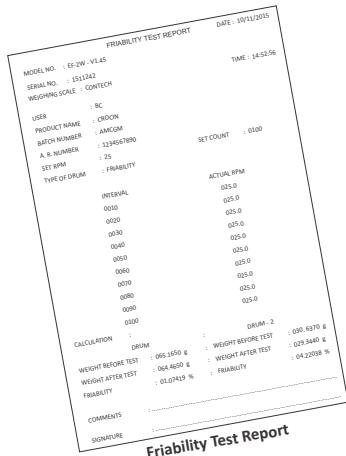
Optional accessories



Abrasion drum
Part no - 0402A00008



Printer Epson LX-310 plus
Part no - 0201A00020



Care & Maintenance

- Routinely check drum(s) for signs of cracks or chips
- Clean the drum(s) thoroughly using de-ionized water and dry with lint-free cloth

Specifications

Model	EF-2W		EF-2	
	230 Volts	110 Volts	230 Volts	110 Volts
Product code	M.S. : 0420300 S.S. : 0440300	M.S. : 0410300 S.S. : 0430300	M.S. : 0420200 S.S. : 0440200	M.S. : 0410200 S.S. : 0430200
No. of drums	2		2	
Speed	20 RPM to 60 RPM		25 RPM	
Accuracy	± 0.5 RPM		± 1 RPM	
Timer	1 sec to 9 hrs. 59 min 59 sec		1 sec to 9 hrs. 59 min 59 sec	
Count	1 to 9999 revolutions		1 to 99999 revolutions	
Display	24 x 2 character LCD		5 digit LED	
Printer Interface	Serial		—	
PC Connectivity	Standard : Serial Optional : External LAN		—	
Electrical power	220/230 V AC ± 10%, 50 Hz, 18 VA 100/110 V AC ± 10%, 50/60 Hz, 18 VA		220/230 V AC ± 10%, 50 Hz, 18 VA 100/110 V AC ± 10%, 50/60 Hz, 18 VA	
Dimensions (W x H x D)	35 cm x 43 cm x 31 cm		35 cm x 43 cm x 31 cm	
Weight	12 kgs		12 kgs	

Our Products

- Complete range of Dissolution Testers
- Dissolution Media Preparator
- Disintegration Testers
- Tablet Hardness Testers
- Electromagnetic Sieve Shakers
- Tap Density Tester
- Bulk Density Tester
- Powder Flow Tester
- Leak Tester
- Peristaltic Pumps



The information contained in this document is believed to be correct but **ELECTROLAB** accepts no liability for any errors and reserves the right to alter specifications without notice
December, 2015 / 040F001

ELECTROLAB (India) PVT. LTD. (CIN NO : U33110MH2002PTC136735)

Head Office : 401, Tirupati Udyog, I. B. Patel road, Off. Western Express highway, Goregaon (East), Mumbai - 400 063, India.

Tel : +91 - 22 - 4041 3131 • E-mail : sales@electrolabindia.com

Factory : EL 23/24, T. T. C., Electronic Zone, M. I. D. C, Mahape, Navi Mumbai - 400 710, India.

Tel : +91 - 22 - 4161 3131 • Website : www.electrolabindia.com

